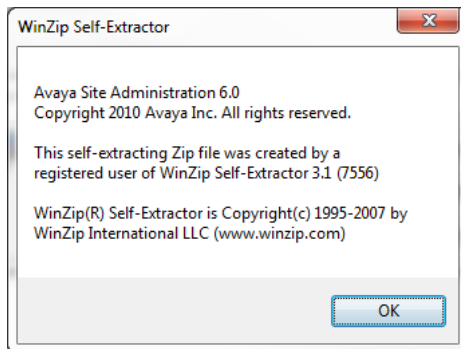


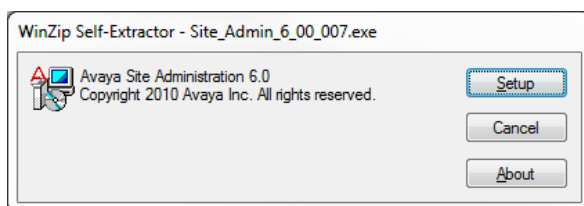
How To Install ASA And Service Pack

Run the **Site_6_6_00_007.exe**.

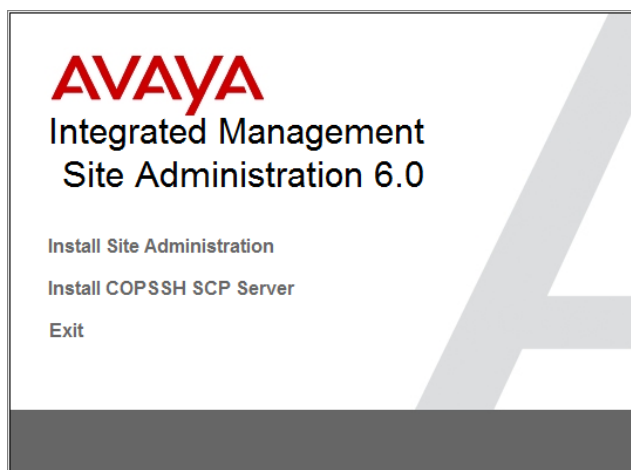
Click **Ok** for the Self-Extractor as below:



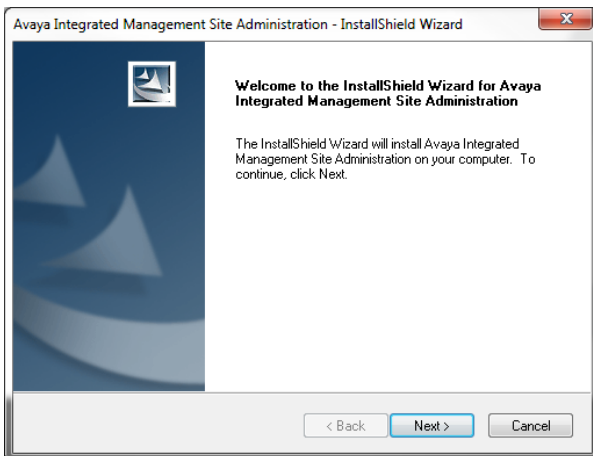
Select **Setup**:



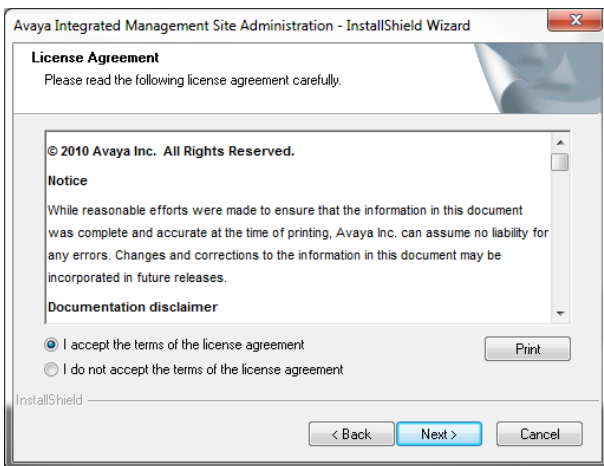
Select **"Install Site Administration"**:



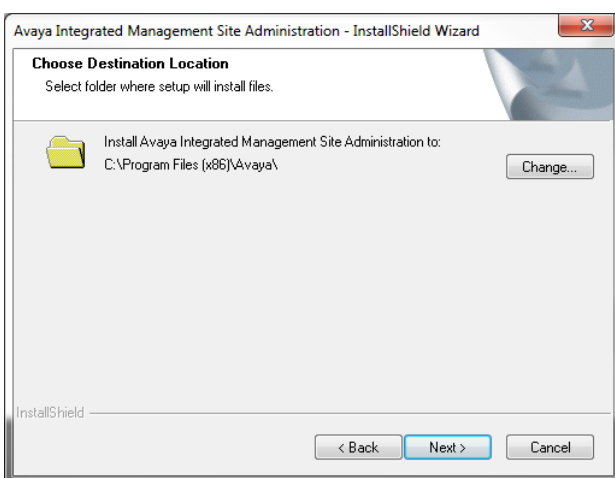
On the **InstallShield Wizard** screen select **“Next”**:



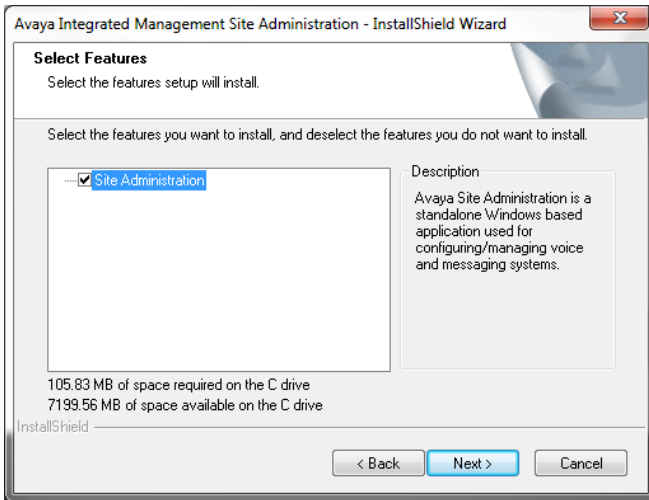
Select **“I accept the terms of the license agreement”** then select **“Next”**:



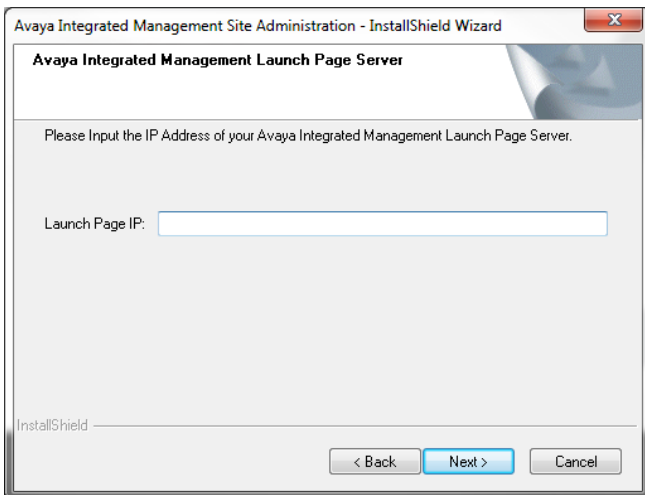
Select **“Next”**:



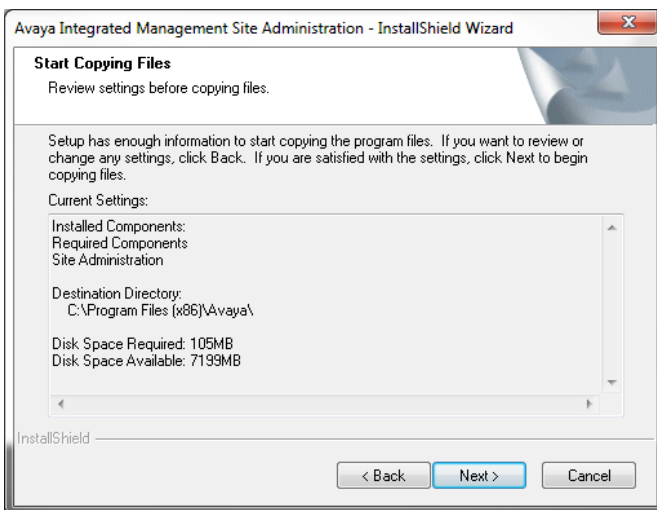
Select “Next” on the features screen:



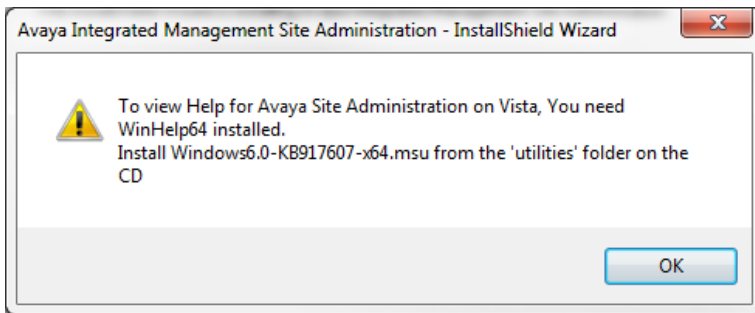
Leave the “Launch Page IP” blank and select “Next”:



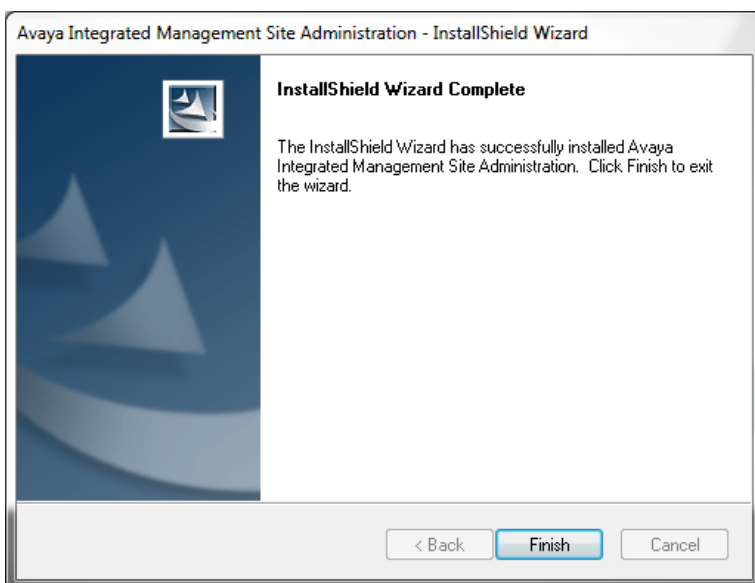
Select “Next”:



Click **“OK”** on the view Help box:



Select **“Finish”**:



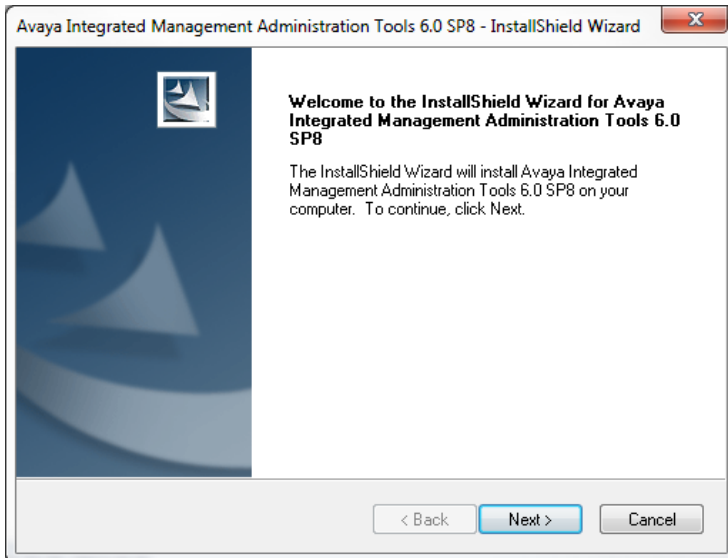
Then select **“Exit”**:



Next install the service pack:

Run **Site_Admin_6_00_007_SP8.02.exe**

Select “**Next**” on the InstallShield Wizard screen



Select “**Finish**”:

